





BY MAX GILLIES



The ENDURING APPETITE of YOUTH

Hope springs eternal, they say, and so many of our hopes for the future necessarily reside in young people. Whether they are our own children, our nieces and nephews, or the offspring of strangers, kids literally represent what lies ahead for humanity — the more we love, educate, and inspire them, the better our collective future will be.

Children can also be irresistibly charming, beautiful, even spellbinding, so it's no surprise that artists through the centuries have sought to capture them in paintings, sculptures, drawings, prints, and every other art form imaginable. This impulse is thriving across America today, so here we are pleased to illustrate an array of recent examples sure to delight and move you. ●

Max Gillies is a contributing writer to *Fine Art Connoisseur*.

ANDREI ZADORINE (b. 1960), *Jeux d'Enfants*, 2014, oil on linen, 35 x 45 in., RJD Gallery, Sag Harbor, NY



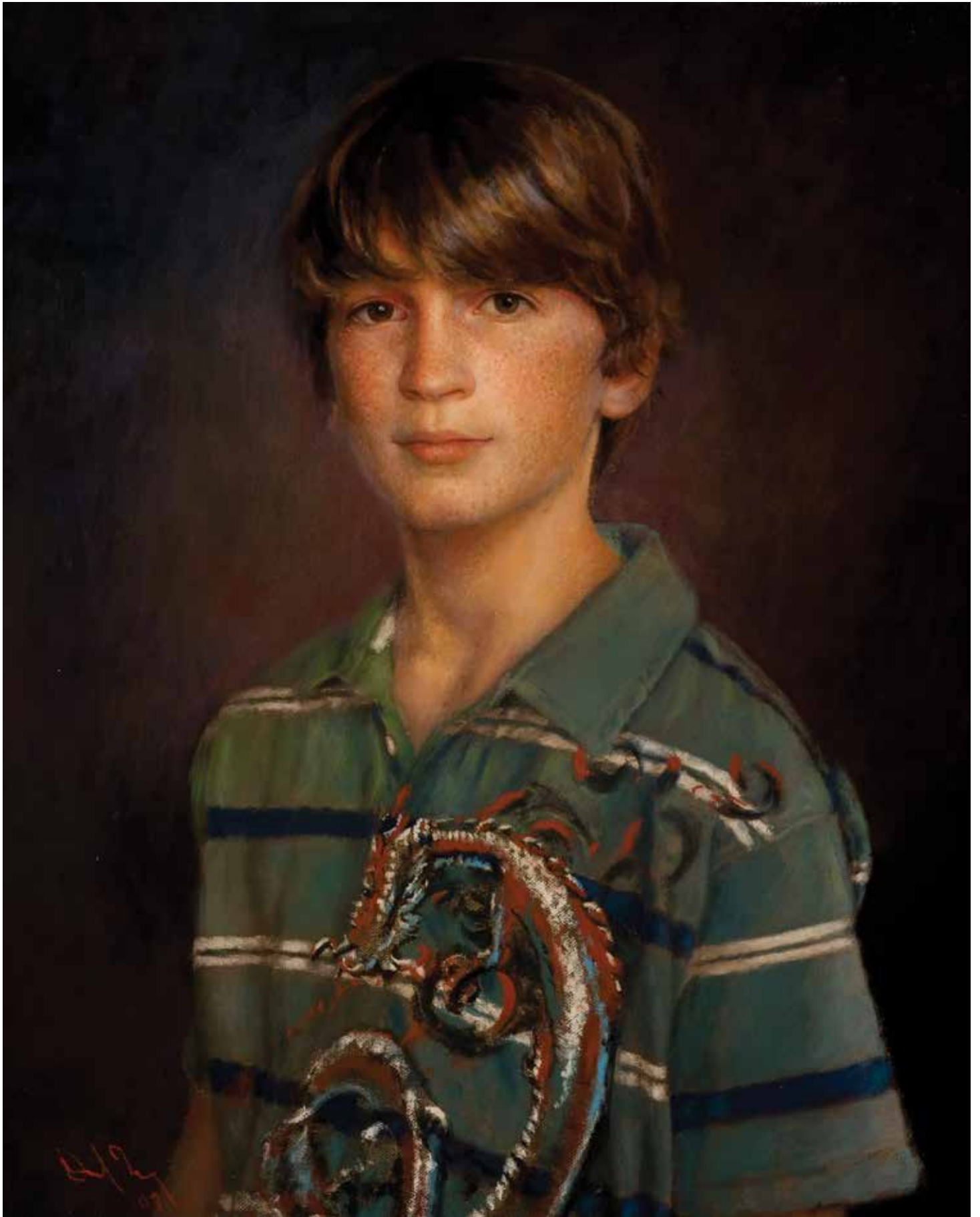
(TOP) JASON DRAKE (b. 1955), *The Promise of Spring*, 2016, egg tempera on panel, 18 x 27 in., private collection ■ (BOTTOM LEFT) SUSIE CHISHOLM (b. 1949), *Bluffton* (edition of 15), 2002, bronze, 16 x 10 x 11 in., collection of the artist; photo: Daniel L. Grantham, Jr. ■ (BOTTOM RIGHT) TOM NACHREINER (b. 1945), *Newborn*, 2016, oil on linen, 30 x 40 in., private collection.



(TOP LEFT) **ANTONIO TOBIAS MENDEZ** (b. 1963), *The Butterfly Swimmer*, bronze, 2010 edition of 12 is 34 in. high; 2003 edition of 12 is 17 1/2 in. high, available through the artist ■ (TOP RIGHT) **CYNTHIA FEUSTEL** (b. 1957), *Indigo*, 2015, oil on linen panel, 14 x 11 in., West Lives On Gallery, Jackson, WY ■ (CENTER LEFT) **LINDA HARRIS REYNOLDS** (b. 1957), *Ripley and Sisco*, 2011, oil on linen, 32 x 22 in., collection of Mr. and Mrs. Jeffrey Nielsen ■ (BOTTOM LEFT) **D.K. RICHARDSON** (b. 1955), *Carlotta, Girl with a Pearl Earring*, 2016, oil on linen on panel, 14 x 11 in., collection of Gunnie Corbett, Fort Worth ■ (BOTTOM RIGHT) **MARY SAUER** (b. 1986), *Washtub*, 2016, oil on linen, 12 x 12 in., Anthony's Contemporary, Salt Lake City



(TOP LEFT) **MICHAEL MACZUGA** (b. 1957), *A Chance*, 2016, oil on panel, 20 x 16 in., Cole Gallery, Edmonds, Washington ■ (TOP RIGHT) **SUSAN LYON** (b. 1969), *Chance Meeting on the Road to Shangri-La*, 2014, oil on canvas, 24 x 18 in., InSight Gallery, Fredericksburg, TX ■ (BOTTOM LEFT) **CHARLENE BROWN** (b. 1957), *Whimsy*, 2014, charcoal and graphite on paper, 9 x 10 in., available through the artist ■ (OPPOSITE PAGE) **DAVID TERRY** (b. 1958), *Michael*, 2009, oil on linen, 20 x 16 in., private collection, Dallas







(THIS PAGE, TOP LEFT) ANN HANSON (b. 1953), *Apsalooke Beauty*, 2016, oil on panel, 10 x 8 in., available in *Small Works, Great Wonders* at the National Cowboy & Western Heritage Museum (Oklahoma City) this November ■ (THIS PAGE, TOP RIGHT) NANCY GUZIK (b. 1955), *Roses and Rachel*, 2015, oil on canvas, 11 x 14 in., West Wind Fine Art, Colorado Springs ■ (THIS PAGE, BOTTOM LEFT) J. RUSSELL WELLS (b. 1954), *Snow Globe*, 2016, oil on canvas, 24 x 24 in., available from the artist ■ (THIS PAGE, RIGHT) SETH HAVERKAMP (b. 1980), *Unfolding*, 2013, oil on board, 24 x 18 in., private collection ■ (OPPOSITE PAGE, TOP LEFT) ANNA ROSE BAIN (b. 1985), *Reckless Abandon*, 2016, oil on linen, 24 x 18 in., available through the artist ■ (OPPOSITE PAGE, CENTER LEFT) KATHERINE GALBRAITH (b. 1948), *Addie*, 2016, oil on linen, 24 x 18 in., private collection ■ (OPPOSITE PAGE, BOTTOM LEFT) JOANN PERALTA (b. 1967), *Heart of the West*, 2015, oil on linen, 30 x 20 in., W.S. Hart, courtesy Natural History Museum of Los Angeles County ■ (OPPOSITE PAGE, RIGHT) DANIEL GERHARTZ (b. 1965), *Hope*, 2016, oil on linen, 48 x 30 in., available through the artist



NICOLE WHITE KENNEDY (b. 1958), *Surfing Siblings*, 2015, oil on canvas, 15 x 30 in., Nicole's Studio & Art Gallery, Raleigh



STANKA KORDIC (b. 1962), *Fragments*, 2016, oil on wood, 8 x 8 in., collection of Steven DaLuz



MICHAEL MALM (b. 1972), *Peaceful*, 2016, oil on board, 24 x 30 in., Trailside Galleries, Jackson, Wyoming



GARY LEE PRICE (b. 1955), *Cartwheel Kids* (edition of 60), 2002, bronze, heights ranging from 32 to 76 in., Xanadu Gallery, Scottsdale



KEVIN MACPHERSON (b. 1956), *Headdress*, 2015, acrylic on oil paper, 16 x 12 in., collection of the artist